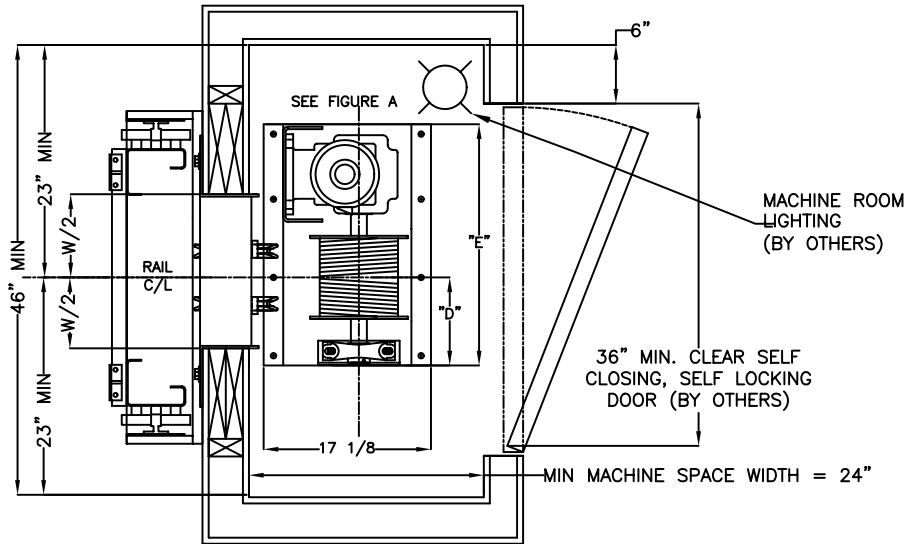


MAX TRAVEL (IN FEET)	8'	10'	12'	14'	16'	18'	20'	22'	24'	25'	27'	29'	31'	33'	35'	37'	39'	41'	43'	44'	46'	48'	50'
STARTING WRAPS	4	3	2	1	5	4	3	2	1	5	4	3	2	1	5	4	3	2	1	4	3	2	1
Kmin = (K1 + K2)min	56"	56"	56"	56"	56"	56"	56"	56"	56"	56"	59"	66"	74"	81"	85"	92"	99"	106"	113"	116"	124"	131"	138"
DRUM LENGTH	8"				12"				16"				20"				23"						
DRUM C/L "D"	8 3/4"				10 3/4"				12 3/4"				16 1/4"				16 1/4"						
MACHINE BASE "E"	24 1/2"				28 1/2"				33 1/8"				39 1/2"				39 1/2"						
WALL CUTOUT WIDTH "W"	17"				17"				17"				25"				25"						

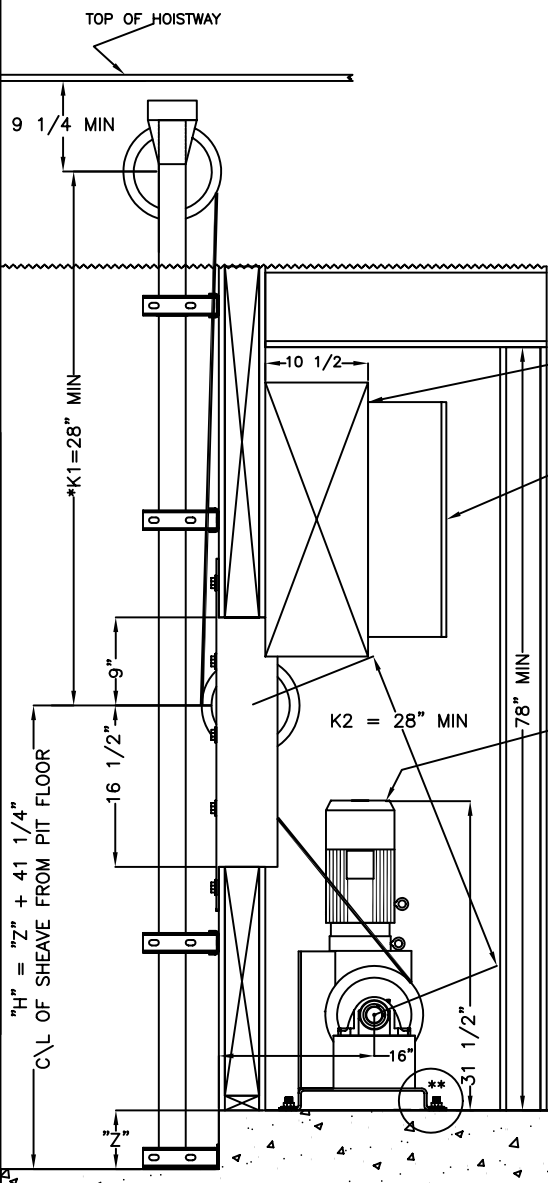


****MAIN LINE DISCONNECT & CAR LIGHT DISCONNECT BY OTHERS****

MAIN LINE DISCONNECT
3 POLE
(1 FOR BATTERY DISCONNECT)

CAR LIGHT DISCONNECT
1 POLE

****DEALER IS RESPONSIBLE FOR ENSURING THAT THE MACHINERY SPACE LAYOUT AND THE MACHINE LOCATION MEET CODE REQUIREMENTS IMPOSED BY THE LOCAL AUTHORITY HAVING JURISDICTION.****



CUSTOM SHEAVE HEIGHT:
INCREASING THE "C" DIMENSION CAN DECREASE THE "H" DIMENSION REQUIREMENT. PLEASE NOTE "K2" DIMENSION CANNOT BE LESS THAN 28".

- NOTES:
- 1) 78" MINIMUM HEADROOM.
 - 2) 3'-0" DEEP x 2'-6" WIDE MINIMUM CLEARANCE IN FRONT OF THE CONTROL PANEL AND DISCONNECTS REQUIRED BY N.E.C.
 - 3) DISCONNECT SWITCHES AND LIGHT SWITCH TO BE LOCATED ON THE STRIKE SIDE OF THE MACHINE ROOM DOOR.
 - 4) MAIN LINE DISCONNECT TO BE FUSED AND CAPABLE OF BEING LOCKED IN THE OPEN POSITION.
 - 5) CAR LIGHT DISCONNECT TO BE CAPABLE OF BEING LOCKED IN THE OPEN POSITION AND HAVING OVERCURRENT PROTECTION MEANS IN THE MACHINE ROOM.
 - 6) MANUAL LOWERING INSTRUCTIONS MUST BE POSTED WITHIN SIGHT OF THE MACHINE.

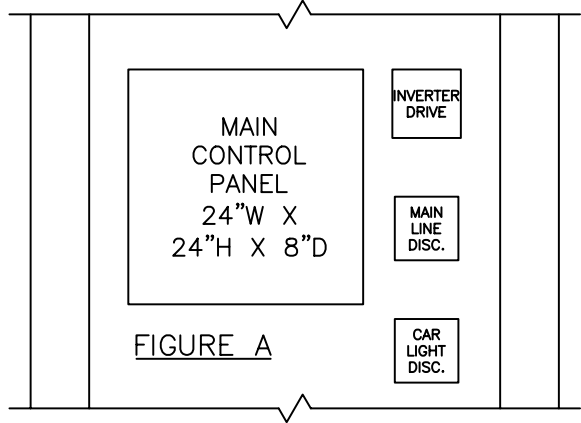
MAIN CONTROL BOX BACKING BY OTHERS

MAIN CONTROL PANEL

REMOVABLE COVER FOR MANUAL LOWERING HANDWHEEL

****REACTIONS ON EACH DRIVE UNIT ANCHOR WITH SAFETY FACTOR 1519 LB PULLOUT 446 LB SHEAR**

4" CONCRETE SLAB REQUIRED. IF NOT AVAILABLE CONTACT FACTORY.



$$* K1min = \frac{Kmin - K2}{2}$$

ACCREDITED HOME ELEVATOR
www.accelelevator.com

1-800-488-5905